

## Fact Sheet 2: Wide Bay-Burnett Statistical Division

Wide Bay-Burnett Statistical Division	Total	Quintile 1
<i>Usual Resident Population</i>	254,660	120,655
<i>Census Collection Districts</i>	571	268
<i>Statistical Local Areas</i>	25	17
<i>Area (sq km)</i>		52,377
<i>Density</i>		4.86 persons per sq km
<i>Remoteness Area 2006 of Quintile 1 CDs</i>		Inner R, Outer R

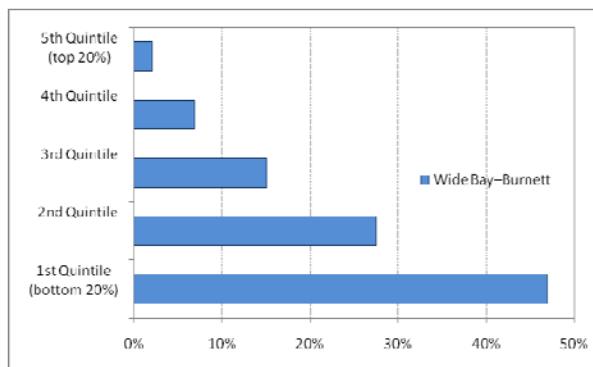
### 1. Overview

In 2006, Wide Bay-Burnett SD had 7% of Queensland's usual resident population and also the greatest level of relative disadvantage in Queensland with a SEIFA IRSD score of 940. Almost half of all residents (47%) were concentrated within Quintile 1 CDs. A further 29% of residents lived in CDs located in Quintile 2.

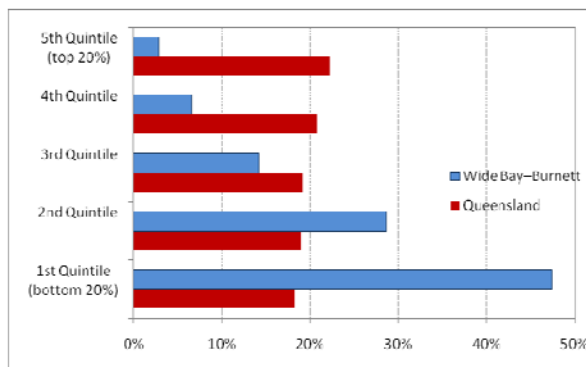
Figure 1a and b show the distribution of CDs and CD population by quintiles in Wide Bay-Burnett.

Figure 1. Proportion of CDs in Wide Bay-Burnett SD by SEIFA IRSD Quintiles

(a) Proportion of CDs in Wide Bay-Burnett



(b) Proportion of CD Population in Wide Bay-Burnett



Almost 50% or 120,655 people lived in the lowest Quintile CDs in Wide Bay-Burnett, expanding to 193,598 people when combining Quintiles 1 and 2.

### 2. Location of the Most Disadvantaged Groups by SLA and LGA

At the 2006 Census, Wide Bay-Burnett SD had 25 SLAs (of a total 476), 17 of which (almost 70%) were in Quintile 1. The following table provides detailed rankings for SLAs in Quintile 1 within Wide Bay-Burnett.

Table 1. SLAs in Quintile 1 - Wide Bay-Burnett

SLAs			
1	Cherbourg (S)	10	Maryborough (C)
2	Kolan (S)	11	Isis (S)
3	Hervey Bay (C) - Pt B	12	Bundaberg (C)
4	Eidsvold (S)	13	Gayndah (S)
5	Tiaro (S)	14	Miriam Vale (S)
6	Nanango (S)	15	Coolooloa (S) - Gympie only
7	Biggenden (S)	16	Mundubbera (S)
8	Wondai (S)	17	Perry (S)
9	Kilkivan (S)		

In 2006, there were 22 LGAs in the Wide Bay-Burnett SD. Cherbourg Aboriginal Shire Council was the only LGA in the Wide Bay-Burnett SD to fall within Quintile 1. Almost 60% of the LGAs within this SD were in Quintile 2 with IRSD scores ranging from 915 to 937.