

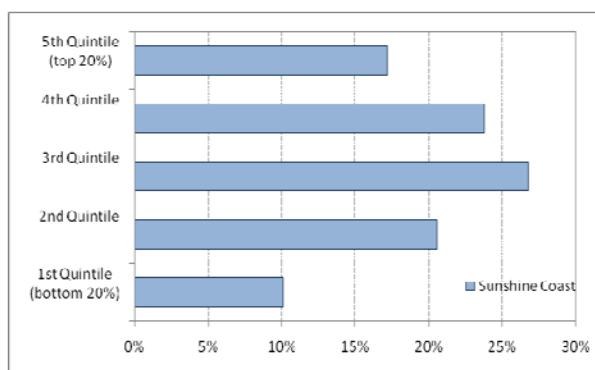
Fact Sheet 12: Sunshine Coast Statistical Division

Sunshine Coast Statistical Division	Total	Quintile 1
	<i>Usual Resident Population</i>	276,266
<i>Census Collection Districts</i>	564	57
<i>Statistical Local Areas</i>	16	0
<i>Area (sq km)</i>		3,125
<i>Density</i>		88.4 persons per sq km
<i>Remoteness Area 2006 of Quintile 1 CDs</i>		Major Cities, Inner R

Overview

Sunshine Coast SD includes 7.1% of Queensland's usual resident population or 276,266 people. It is the third most populated area in Queensland and has the third highest weighted average SEIFA IRSD score at 1,013. 10% of residents in the Sunshine Coast Regional Council LGA were in Quintile 1. Error! Reference source not found.1 (a) and (b) show distribution of CDs and CD population by quintiles. Table 1 shows the proportion of CDs in Sunshine Coast SD by IRSD Quintiles

(a) Proportion of CDs in Sunshine Coast SD by IRSD Quintiles



(b) Proportion of CD Population in Sunshine Coast SD by IRSD Quintiles

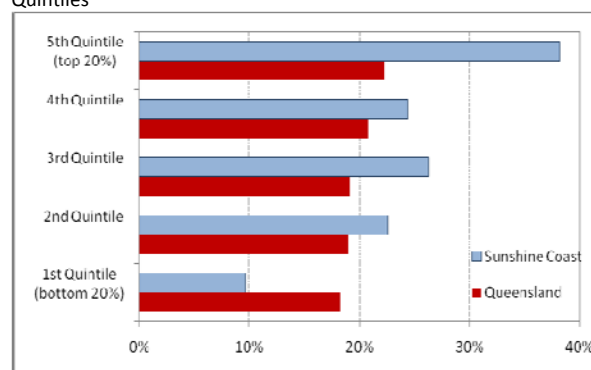


Table 1. Total Number of CDs and Population in Sunshine Coast SD by IRSD Quintiles

	Total	Total with IRSD Score	Proportion by IRSD Quintiles (%)					Total CDs with no IRSD Score
			Relatively most disadvantaged		Relatively least disadvantaged			
			1 bottom 20%	2	3	4	5 top 20%	
CDs	564	554	57 10%	116 21%	151 27%	134 24%	97 18%	10 2%
Population in CDs	276,266	275,615	26,631 9.6%	62,350 23%	72,543 26%	67,307 24%	105,240 38%	651 0%
Average IRSD Score for CDs		1,013	888	965	1,012	1,051	1,096	-

Location of the Most Relatively Disadvantaged Groups by SLA and LGA

The Sunshine Coast SD contained 16 SLAs. None of these were identified as being in Quintile 1. However, disadvantaged locations are evident at a smaller area level. There were Quintile 1 CDs in almost all of the SLAs in the Sunshine Coast SD (excluding Maroochy (S) - Paynter-Petrie Creek).