

Fact Sheet 8: Darling Downs Statistical Division

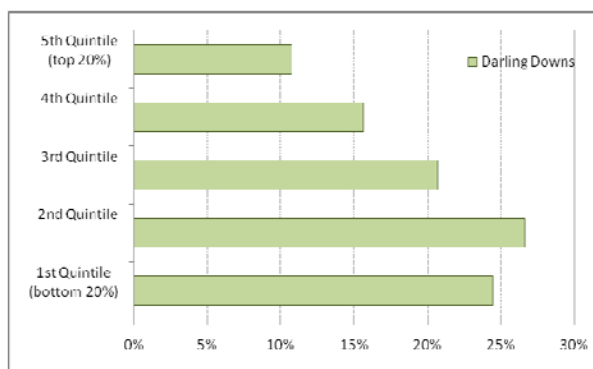
Darling Downs Statistical Division	Total	Quintile 1
<i>Usual Resident Population</i>	213,758	50,879
<i>Census Collection Districts</i>	474	116
<i>Statistical Local Areas</i>	30	4
<i>Area (sq km)</i>		90,246
<i>Density</i>	2.37 persons per sq km	
<i>Remoteness Area 2006 of Quintile 1 CDs</i>	Inner R, Outer R, Remote	

Overview

The SEIFA IRSD score for Darling Downs was 986. Darling Downs had 8% of the total Queensland population in Quintile 1. **Figure 1(a)** and **(b)** and **Table 1** illustrate the distribution of CDs and CD population by quintiles.

Figure 1. Proportion of Darling Downs CDs in SD by IRSD Quintiles

(a) Proportion of Darling Downs CDs in SD by IRSD Quintiles



(b) Proportion of Darling Downs CD Population in SD by IRSD Quintiles

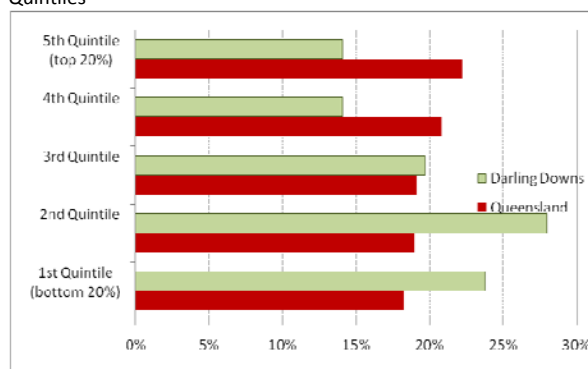


Table 1. Total Number of CDs and Population in the Darling Downs SD by IRSD Quintiles

	Total	Total with IRSD Score	Proportion by IRSD Quintiles (%)					Total CDs with no IRSD Score
			Relatively most disadvantaged		Relatively least disadvantaged			
			1 bottom 20%	2	3	4	5 top 20%	
CDs	474	465	116 25%	126 27%	98 21%	74 16%	51 11%	9 2%
Population in CDs	213,758	212,909	50,879 24%	59,776 28%	42,123 20%	30,048 14%	30,083 14%	849 0%
Average IRSD Score for CDs		986	882	965	1,009	1,051	1,100	-

24% of residents were located in Quintile 1 CDs and 28% of the population resided in the second most disadvantaged areas of the Darling Downs (Quintile 2). This equated to a population of 110,655.

Location of the Most Relatively Disadvantaged Groups by SLA and LGA

The Darling Downs SD includes 30 SLAs. 5 SLAs were in Quintile 1. The SLA of Tara was the most disadvantaged of all Darling Downs SLAs with an IRSD Score of 900 (and was ranked 57 in the State). SLAs ranking second to fifth with scores ranging from 932 to 940 were: Warwick (S) – Central, Stanthorpe (S), Inglewood (S), Toowoomba (C) – North-West. In 2006, there were 19 LGAs in the Darling Downs SD, none of which recorded IRSD scores in Quintile 1. However, LGAs including CDs within Quintile 1 were as follows: Banana Shire Council, Dalby Regional Council, Goondiwindi Regional Council, Southern Downs Regional Council, Toowoomba Regional Council.