

Fact Sheet 7: Central West Statistical Division

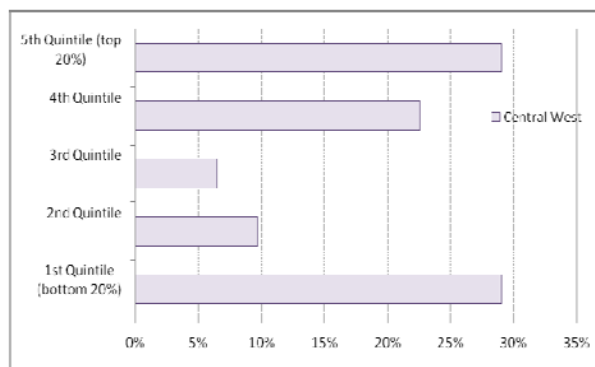
Central West Statistical Division	Total	Quintile 1
<i>Usual Resident Population</i>	10,851	4,546
<i>Census Collection Districts</i>	62	18
<i>Statistical Local Areas</i>	11	4
<i>Area (sq km)</i>		374,743
<i>Density</i>		0.03 persons per sq km
<i>Remoteness Area 2006 of Quintile 1 CDs</i>		V Remote

Overview

Central West SD had an overall weighted average SEIFA IRSD score of 967. **Figure1 (a)** and **(b)** and **Table1** show the distribution of CDs and CD population by quintiles. In 2006 there was a significant gap between the most and least disadvantaged CDs in Central West, where there are equally high proportions of the most and least disadvantaged CDs (29% in bottom and top quintiles). The SD had 42% of its population located in Quintile 1 areas (42% or 4,546 people) which is very high compared to the overall figure for Queensland.

Figure1. Central West SD Distribution of CDs and CD Population by Quintiles

(a) Proportion of CDs in Central West SD by IRSD Quintiles



(b) Proportion of CD Population in Central West SD by IRSD Quintiles

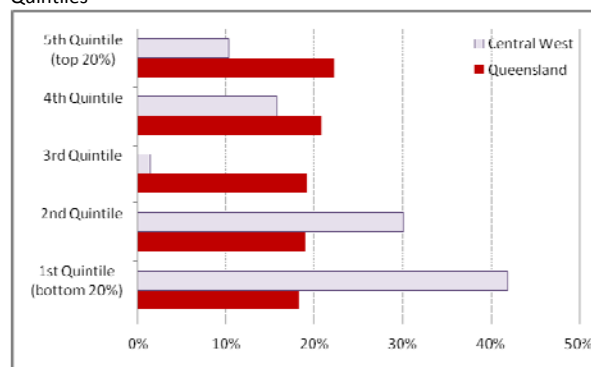


Table1. Total Number of CDs and Population in the Central West SD by IRSD Quintiles

	Total	Total with IRSD Score	Proportion by IRSD Quintiles (%)					Total CDs with no IRSD Score
			Relatively most disadvantaged		Relatively least disadvantaged			
			1 bottom 20%	2	3	4	5 top 20%	
CDs	62	60	18 29%	6 10%	4 7%	14 23%	18 29%	2 3%
Population in CDs	10,851	10,808	4,546 42%	3,268 30%	158 1%	1,714 16%	1,122 10%	43 0%
Average IRSD Score for CDs		967	891	981	1,012	1,052	1,099	-

Location of the Most Relatively Disadvantaged Groups by SLA and LGA

At the 2006 Census, Central West SD included 11 SLAs. Of these, four SLAs were in Quintile 1: Boulia (S), Diamantina (S), Winton (S) and Blackall (S). In 2006, there were 11 LGAs in the Central West SD, none of which recorded an IRSD score in Quintile 1. However, the following 6 LGAs contained CDs located in Quintile 1: Barcardine (RegC), Barcoo (ShireC), Blackall-Tambo (RegC), Boulia (ShireC), Diamantina (ShireC), Longreach (RegC), Winton (ShireC).